



FRESHFILTER

F33



Unique
design,
high
efficiency

FRESHFILTER F33

With a unique design, the F33 is characterized by its high efficiency. The Freshfilter F33 system is a high-end filtering system suitable for all types of machinery. The unique design, incorporating all possible filter combinations, makes the F33 the perfect system for any situation.



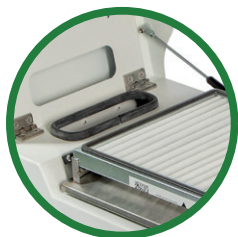


The best choice for the most demanding conditions.



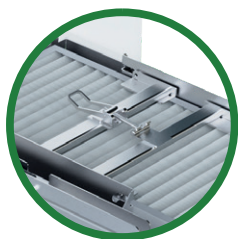
Dust particles can escape

The F33 incorporates gravity pre-filtration. The air is drawn in from the underside of the P1 pre-filter. The significant advantage is that coarse dust particles can escape through vibrations of the machine. This results in a substantial extension of the lifespan of the P1 pre-filter.



Extremely low air velocity

After passing through the pre-filter, the air is drawn through the lid into the second filter compartment. In this compartment, the air is evenly distributed before being blown through the P3 (and optional activated carbon) filter. This unique feature ensures an extremely low air velocity and 100% utilization of the filter surface area.



Variable combination height

Fill frames or complete filter packages are a thing of the past with the F33. Filters in the second filter compartment are tensioned using the included standard filter tensioners. The total filling height of the filter compartment is 150mm. However, any combination height of the Freshfilter filters can be tensioned.

Unique airflow

The Freshfilter F33 distinguishes itself from the rest with its unique airflow. Despite being equipped with a standard H13 dust filter, the filtration level of the F33 reaches even H14 level. This means that the F33 filters polluted air not only with 99.95% efficiency but with an even higher efficiency of 99.995%.

Fully automatic control

The F33 is equipped with automatic control. It is driven by the F4000 controller located inside the cabin. When the machine is started, the controller automatically activates. The pressure is promptly built up, ensuring immediate protection for the operator. If, for example, the positive pressure is insufficient, the controller will promptly issue a warning.

When using an activated carbon filter extensively, an optional gas sensor is often required. The F4000 can be expanded with this sensor as an optional feature. The sensor measures the air quality inside the cabin and can detect the breakthrough of an activated carbon filter faster than the operator.

It is recommended to have the sensor checked during the annual inspection of the positive pressure filtration system. Freshfilter can often perform this inspection on-site using the latest techniques, eliminating the need to send anything in and ensuring that the operator does not have to work without positive pressure protection.



Technical specifications F33

Dimensions

900 * 440 * 295 mm

Dust filtration

P1 (ISO16890) and P3 (H13 according to EN1822)

Weight

28 kg without filters

Gas filtration

10 kg Activated carbon filter(EN12941 / EN14387)

Max. pressure

500 Pascal, 120m3 per hour

In accordance with regulations

ISO23875 / NEN4444 / CROW400